



# Item Code 21297/77963

## Handy Chalk Line Auto-rewind Thin Thread Orange

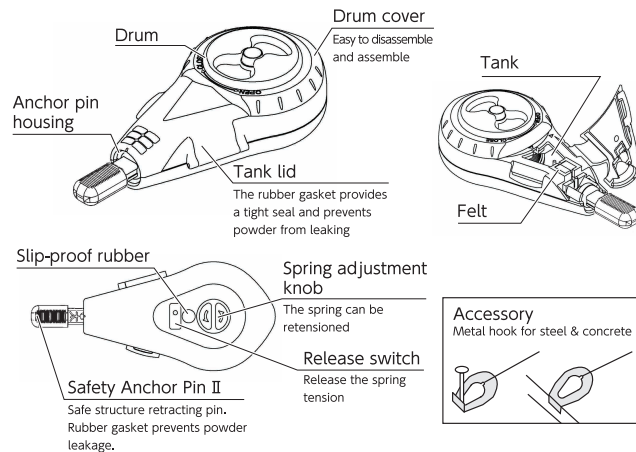
### ■Use

- Marking lines with chalk

### ■Features

- Clear body allows you to check for remaining powder and lumps
- Sealed tank prevents powder leaking and humidity entering
- Special thread holds more chalk powder
- Safety Anchor Pin II for both thick and thin lines
- Wide opening for easier thread replacement

### ■Part Names



### ■Specifications

Material	Main Body: ABS resin, polyacetal resin, silicon rubber Anchor Pin: ABS resin, rubber Pin: Spring steel Thread: Nylon Spring (Auto-rewind): Stainless steel Metal Hook, Thread Mouth Ring: Stainless steel Felt: Chemical fiber
Thread	φ 0.5 mm x 15 m
Body Size	180 x 76 x 45.5 mm
Weight	185 g
Accessory	Metal hook for metal/concrete

#### ⚠ Warning

- The needle of the anchor pin is sharp and dangerous. For your safety, do not remove the anchor pin by pulling on the thread.
- Pay attention to the anchor pin when winding the thread. For your safety, please wear safety goggles.
- To rewind the thread, press on the drum and adjust the speed of the anchor pin while safely rewinding it.



#### ⚠ Caution

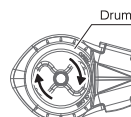
- Make sure to stick the anchor pin firmly into the material so that it does not come loose.
- Using a damaged thread can cause a malfunction. If the thread becomes damaged, immediately cut the damaged portion and reattach the anchor pin.
- Do not overfill with powder as this can cause leakage. If too much powder has been added, open the tank lid and remove the excess amount.
- Use Shinwa Chalk Powder for the best results.
- Close the tank lid completely until it clicks into place.
- Do not turn the spring adjustment knob in the opposite direction as this may result in a malfunction.

### 8 m Auto-rewind Type

15 m of thread is wound up. Can automatically rewind 8 m of thread. The spring has already been tensioned. Chalk marking will be possible once filled with chalk powder. If the device ceases to rewind partway through, please refer to ■Troubleshooting and Solutions.

### ■How to Rewind the Thread

Up to 8 m of thread can be rewound by the spring. When rewinding more than 8 m\*, use the spring for the first 8 m and turn the drum as shown in the diagram above to manually rewind the remaining thread. Please tension the spring after the Safety Anchor Pin II has been completely stowed away. \*When you pull out more than 8 m, please do it while releasing the tension of the spring.



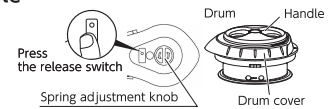
**Shinwa Rules Co., Ltd.**  
3481 Koike, Tsubame, Niigata, 959-1276, Japan  
URL <https://www.shinwasokutei.co.jp/english/>  
MADE IN CHINA

Chalk powder is not included. Please purchase Shinwa's chalk powder for chalk lines separately.

### ■How to Disassemble and Assemble

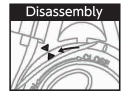
#### Spring release

1. Push the spring release switch several times until the spring does not retract.



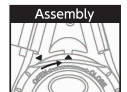
#### Disassembly

2. Open the tank lid, turn the drum cover in the OPEN direction, and align ▼ on the main body with ▲ on the drum cover to detach the drum section.



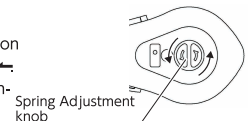
#### Assembly (Remove all the powder inside the tank)

3. Align the ▲ on the drum cover to the ▼ on the main body. In this state, set the drum so that there is no gap between the main body and the drum, and turn the drum over to the CLOSE direction to fix it.



#### Tensioning the spring

5. Tension the spring by turning the spring adjustment knob on the back of the device four or five times in the direction of ←. Use only after pulling out the Safety Anchor Pin II and confirming that it returns properly.



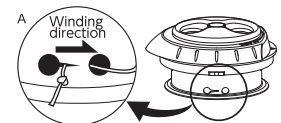
### ■How to Replace the Thread

#### Disassembly

1. Release the spring tension.
2. Remove the drum part, referring to "■How to Disassemble and Assemble, Spring release/Disassembly" above.

#### Thread Replacement

3. Take out the drum and untie the old thread.
4. Make a knot at the end of the new thread.
5. Hook the knot as shown in Diagram A on the right, and wind the thread in the direction of thread winding.

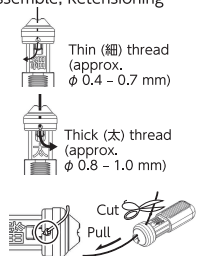


#### Assembly

6. Put the drum in its original place and refer to "■How to Disassemble and Assemble, Assembly" above.
7. Tension the spring by referring to "■How to Disassemble and Assemble, Retensioning the spring" above.

### ■How to Install the Safety Anchor Pin II

1. Pass the thread through the tip of the Safety Anchor Pin II. When using a thin thread (approx. φ 0.4 - 0.7 mm), thread it through the hole on the "thin (細)" side, and when using a thick thread (approx. φ 0.8 - 1.0 mm), thread it through the hole on the "thick (太)" side.
2. Make a knot at the end of the thread that was passed through.
3. Pull the thread so that the knot catches and is secured inside the Safety Anchor Pin II's cavity.
4. Cut off excess thread that is protruding and the process will be complete.

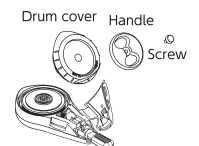


### ■How to Clean the Drum Cover

Remove dust and dirt from each part. Do not remove more than the drum cover. If you remove the drum, you cannot reassemble it unless you remove all the powder inside.

#### Disassembly and Cleaning

1. Open the tank lid.
2. Unscrew and take apart the handle as well.
3. Turn the drum cover toward the OPEN direction, and align ▼ on the main body with ▲ on the drum cover to remove the drum cover.
4. Clean off all the dust and dirt from the removed parts. Be sure to use a dry cloth or tissue paper.



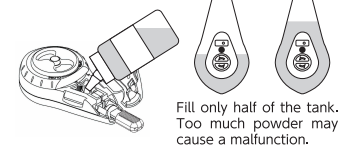
#### Assembly

- Assemble in the reverse order of disassembly.
5. Align the ▲ on the drum cover with the ▼ on the main body. Turn the drum cover toward the CLOSE direction to secure it.
6. Place the handle on it so that the cross cavities are aligned.
7. Tighten the screw and close the tank lid.



### ■How to Add Chalk Powder

1. Place the main body on a flat surface and open the tank lid.
2. Pour the powder into the tank.
3. Close the tank lid completely until it clicks into place.



### ■Troubleshooting and Solutions

Problem	Troubleshoot	Solution
The thread will not come out or does not rewind well.	Did the thread come off from the drum?	→ Re-wind the thread again normally
	Did the thread become entangled?	→ Cut the thread where it is entangled
	Is the spring's tension becoming weaker?	→ Tension the spring
	Is the powder clogging the passage of the thread?	→ Please refer to "■How to Clean the Drum Cover"
	Are any of the internal parts damaged or worn out?	→ Since parts cannot be replaced, please replace the device